

"K...E"

AIR CONTACTORS FOR a.c. CURRENT type "K...E"

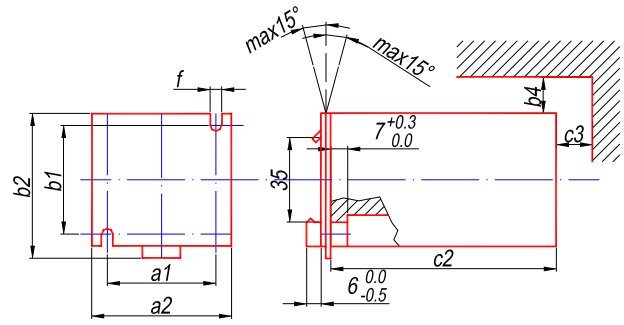


! Air contactors series K...E are successfully replaced with series C /up to 32 A/ and series CM /up to 95 A/.

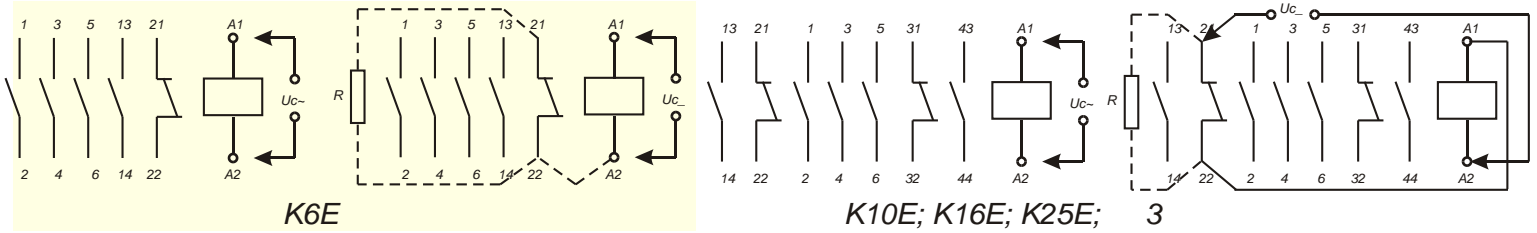
| | | Technical data | dimensions | K6E | K10E | K16E | K25E | KB3 |
|------|-----------------------|---|------------|-----------------------|-----------------------|------------------------|-----------------------|------------------------|
| AC3 | | Insulation voltage U_{iV} , AC | V, DC | 500 220 | 500 220 | 660 220 | 660 220 | 660 220 |
| | a | Standard power ratings of 3 phase motor 220V- 380V- 500V- 660V- P | kW | 1.5 3 3 - | 2.5 4 3.5 - | 4 7.5 7.5 7.5 | 7 12.5 15 15 | 17.5 30 30 30 |
| | | Rated current $I_{th}=I_e$; $U_e=380V$ | A | 6 | 10 | 16 | 25 | 63 |
| | I_e 1200 . . . | Electrical endurance at I_e and 1200 op.c/h op.c. | | 1.10^6 | 1.10^6 | 1.10^6 | 1.10^6 | $1.5.10^6$ |
| A 11 | | Insulation voltage U_i V, AC | V, DC | 500 220 | 500 220 | 500 220 | 500 220 | 500 220 |
| | | Number and kind of auxiliary contacts I_e ; $U_e=380V$ I_{th} | A A | 1NO+ 1NC 2 6 | 2NO+ 2NC 2 6 | 2NO+ 2NC 2 6 | 2NO+ 2NC 2 6 | 2NO+ 2NC 2 6 |
| | E I_e 1200 . . . | Electrical endurance at I_e and 1200 op.c/h op.c. | | 1.10^6 | 1.10^6 | 1.10^6 | 1.10^6 | 1.10^6 |
| | 50 Hz u | Coil consumption at 50 Hz and rated voltage - opened anchor | VA W | 70 50 | 90 60 | 110 80 | 140 100 | 230 190 |
| | | - closed anchor | VA W | 14 4 | 17 6 | 18 8 | 20 9 | 35 25 |

Dimensions

| | | | | | | | |
|-------------------------------|---------------------------|-------|----------|----------|----------|----------|----------|
| Overall dimensions | a2 | mm | 54.5 | 58 | 65 | 70 | 93 |
| | b2 | mm | 50 | 75 | 60 | 74 | 84 |
| | c | mm | 75 | 93.5 | 94 | 97 | 122 |
| Assembly | a1 | mm | 40 | 45 | 50 | 50 | 75 |
| | b1 | mm | 40 | 45 | 50 | 50 | 70 |
| | f | mm | 4.8 | 4.8 | 4.5 | 4.5 | 8 |
| | Limits of ionization area | b4 | mm | 15 | 15 | 15 | 15 |
| | c3 | mm | 15 | 15 | 15 | 15 | 15 |
| Fixing screw | M4 | pcs | 2 | 2 | 2 | 2 | 3 |
| .Allowable wire cross-section | | | | | | | |
| 1-6 | single cored | sq.mm | 0.75-2.5 | 1-2.5 | 1.5-4 | 2.5-6 | 6-25 |
| | multi cored | sq.mm | 0.75-1.5 | 0.75-1.5 | 1-2.5 | 1.5-4 | 6-16 |
| 13-44 | single cored | sq.mm | 0.75-2.5 | 0.75-2.5 | 0.75-2.5 | 0.75-2.5 | 0.75-2.5 |
| | multi cored | sq.mm | 0.75-1.5 | 0.75-1.5 | 0.75-1.5 | 0.75-1.5 | 0.75-1.5 |



Wiring diagrams



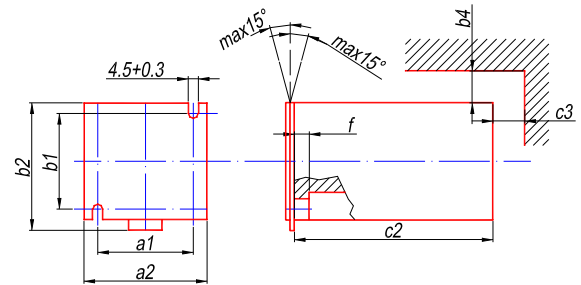
AUXILIARY CONTACTORS type

0 and 1

| | | | | | |
|---|-----------------------|---------------|-----------------------------|-------------------|----------------------------|
| Technical data | Isolation voltage | Ui | dimensions | K -0 | K -1 |
| | | | V, AC | 500 | 500 |
| | | | V,DC | 220 | 220 |
| Rated current | Ith=Ie; Ue=380V | A | | 4 | 6 |
| Electrical endurance for AC11 category | at Ie and 1200 op.c/h | op.c. | | 1.10 ⁶ | 1.10 ⁶ |
| | | | Number and kind of contacts | - | from 0NO+5NC up to 5NO+0NC |
| Coil consumption at 50Hz & voltage rating | opened anchor | VA | 78 | 100 | |
| | | closed anchor | VA | 11 | 18 |
| Overall dimensions | a2 | mm | 55 | 58 | |
| | b2 | mm | 49 | 55 | |
| | c2 | mm | 74 | 94 | |
| Assembly | a1 | mm | 40 | 43 | |
| | b1 | mm | 40 | 45 | |
| | f | mm | 7 | 7 | |
| Limits of ionization area | b4 | mm | 15 | 15 | |
| | c3 | mm | 15 | 10 | |
| Fixing screw | M4 | pcs | 2 | 2 | |
| Allowable areas of wires | | | | | |
| | single cored | sq.mm | 0.75-2.5 | 1-2.5 | |
| | multi cored | sq.mm | 0.75-1.5 | 0.75-1.5 | |



IEC337-1
7695-85



Wiring diagrams

